

30 April 2019

*This statement provides you with key information about this product.
 This statement is a part of the offering document.
 You should not invest in this product based on this statement alone.*

Quick facts

Manager:	BEA Union Investment Management Limited
Trustee:	Bank of East Asia (Trustees) Limited
Ongoing charges over a year:	Class D Units: 1.96% p.a.* Class R Units: 1.71% p.a.^
Dealing frequency:	Daily (Hong Kong business days)
Base currency:	HK\$ (Class currency for Class R Units: US\$)
Dividend policy:	No dividends will be declared or distributed.
Financial year end of this sub-fund:	31 December
Minimum investment:	Class D Units: HK\$10,000 initial, HK\$5,000 additional Class R Units: US\$2,000 initial, US\$1,000 additional

* This figure is an estimate only and may vary from year to year. The figure is calculated based on the estimated ongoing expenses chargeable to the sub-fund expressed as a percentage of the sub-fund's estimated average net asset value.

^ This figure is based on the ongoing expenses for the period ended 31 December 2018 and may vary from year to year.

What is this product?

BEA Union Investment Asia Strategic Growth Fund (the "Investment Fund") is a sub-fund of BEA Union Investment Capital Growth Fund (the "Fund"), which is a unit trust established as an umbrella fund under the laws of Hong Kong.

Objective and Investment Strategy
Objective

The investment objective of the Investment Fund is to provide investors with long term capital growth in HK dollar terms through investing in a diversified portfolio primarily consisting of securities that are either (a) listed in the Asia Pacific region or (b) issued by companies that are incorporated in the Asia Pacific region or companies which have significant operations in or derive a significant portion of revenue or profits from the Asia Pacific region (including but not limited to Hong Kong, Singapore, Malaysia, Korea, Taiwan, Thailand, Indonesia, the Philippines, India and China but excluding Japan).

Strategy

The Manager intends to adopt a "top-down" approach to first determine the asset allocation in each country according to the Manager's analysis of the market and economic trends and then select suitable investments within each country by applying fundamental analysis. Corporate earnings growth and funds flow analysis will also be an integral part of the investment decision-making process.

The Manager anticipates that the maximum exposure to any one of the Singapore, Malaysia, Korea, Taiwan and China markets will not exceed 50% of the Investment Fund's assets and the maximum exposure to any one of the Thailand, Indonesia, the Philippines and India markets will not exceed 30% of the Investment Fund's assets.

At least 60% of the assets of the Investment Fund other than cash or deposits may be invested in equity securities, which may include securities from initial public offering. Up to 10% of the assets of the Investment Fund may be invested in other securities (as permitted under Schedule 1 to the Mandatory Provident Fund Schemes (General) Regulation). The Investment Fund's portfolio may also include cash, deposits, fixed interest securities, instruments with floating interest rates and short-term paper such as Treasury Bills, certificates of deposit, bankers' acceptances and short-term commercial paper. If the Manager considers that conditions so require and it is in the interests of Unitholders to do so, a substantial portion of the portfolio may be held in cash or such instruments.

Financial futures and options contracts may be entered into for the Investment Fund for hedging purposes to protect and enhance asset value, consistent with the investment objective of the Investment Fund. Currency forward contracts may be used for the purposes of hedging into HK dollars.

The Manager expects the return of the Investment Fund over the long-term to reflect movements in the stock markets of the Asian region.

What are the key risks?

Investment involves risks. Please refer to the Explanatory Memorandum for details including the risk factors.

1. Investment and securities markets risk

- The Investment Fund is an investment fund. The Investment Fund's investment portfolio may fall in value and therefore your investment in the Investment Fund may suffer losses.
- The Investment Fund invests directly or indirectly in equities and thus is subject to the risks generally associated with equity investment. Factors affecting the stock values include but not limited to changes in investment sentiment, political, economic and social environment and liquidity and volatility in the equity markets.

2. Emerging markets risk

- The markets in which the Investment Fund will invest may be considered as emerging markets. Investing in emerging markets involves a greater risk of loss than investing in more developed markets due to, among other factors, greater political, tax, economic, foreign exchange, liquidity and regulatory risks, and investments tend to be more volatile than developed markets.

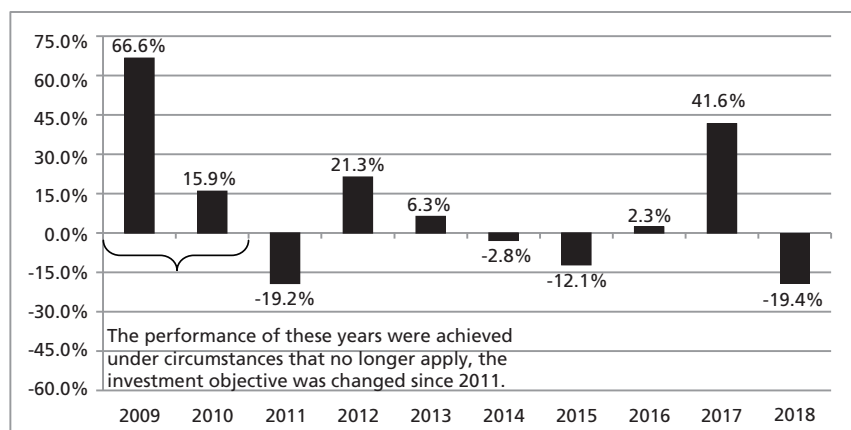
3. Currency risk

- The Investment Fund is denominated in HK dollars, although it may be invested in whole or in part in assets quoted in other currencies. The performance of the Investment Fund will therefore be affected by movements in the exchange rate between the currencies in which the assets are held and HK dollars. For Class R Units where the currency of denomination (i.e. US dollars) is different from the base currency (i.e. HK dollars), Unitholders of such class of Units are also subject to exchange rate risks between the two currencies.

4. Risk in relation to financial futures, options and forward contracts

- The Investment Fund may use financial futures, options and/or forward contracts for hedging purposes. Such hedging may not achieve the intended purpose. In an adverse situation, the Investment Fund's use of financial futures, options and forward contracts may become ineffective in achieving hedging and the Investment Fund may suffer significant losses.

How has the Investment Fund performed?



- Past performance information is not indicative of future performance. Investors may not get back the full amount invested.
- The computation basis of the performance is based on the calendar year end, NAV-to-NAV, with dividend reinvested.
- These figures show by how much Class R Units increased or decreased in value during the calendar year being shown. Performance data has been calculated in US\$ including ongoing charges and excluding subscription fee and redemption fee you might have to pay.
- Investment Fund / Class R Units launch date: 2003

Is there any guarantee?

The Investment Fund does not have any guarantees. You may not get back the full amount of money you invest.

What are the fees and charges?

Charges which may be payable by you

You may have to pay the following fees when dealing in the units of the Investment Fund.

Fee	What you pay
Subscription fee (Preliminary Charge)	Classes D and R Units: up to 5% of issue price
Switching fee (Conversion Charge)	Classes D and R Units: currently, the aggregate of the realisation charge and preliminary charge payable on a switch will not exceed 3% of issue price of new units
Redemption fee (Realisation Charge)	Classes D and R Units: up to 0.5% of realisation price (currently nil)

Ongoing fees payable by the Fund

The following expenses will be paid out of the Investment Fund. They affect you because they reduce the return you get on your investments.

	Annual rate (as a % of the Investment Fund's value)
Management Fee	Class D Units: 1.75% p.a.* Class R Units: 1.50% p.a.*
Trustee Fee	Classes D and R Units: 0.125% p.a.*
Performance Fee	N/A
Administration Fee	N/A
Registrar's Fee	0.015% – 0.05% p.a. subject to minimum of HK\$3,000 p.a.

Other fees

You may have to pay other fees and charges when dealing in the units of the Investment Fund.

* You should note that these fees may be increased, up to a specified permitted maximum, by giving unitholders at least three months' prior notice. For details, please refer to pages 26 and 27 of the Explanatory Memorandum.

Additional Information

- You generally buy, redeem and switch units at the Investment Fund's next-determined net asset value (NAV) after the Authorised Distributor receives your request in good order on or before 4:00 p.m. (Hong Kong time) on a Dealing Day. The Authorised Distributor(s) may impose an earlier cut-off time before the dealing deadline for receiving instructions for subscriptions, realisations or switching. Investors should confirm the arrangements with the Authorised Distributor(s) concerned.
- The net asset value of the Investment Fund is calculated on each Dealing Day, and the price of units is published on the Manager's website: www.bea-union-investment.com (this website has not been reviewed or authorised by the SFC).
- Investors may obtain information on BEA Union Investment Management Limited from the following website: www.bea-union-investment.com.

Important

If you are in doubt, you should seek professional advice.

The SFC takes no responsibility for the contents of this statement and makes no representation as to its accuracy or completeness.